

**BARBECUES : BONESCO
JUNIOR - CHARCOAL (SC - LC)
QUICKSTART (QST S - QST L)**



BONESCO JUNIOR



BONESCO CHARCOAL S



BONESCO CHARCOAL L

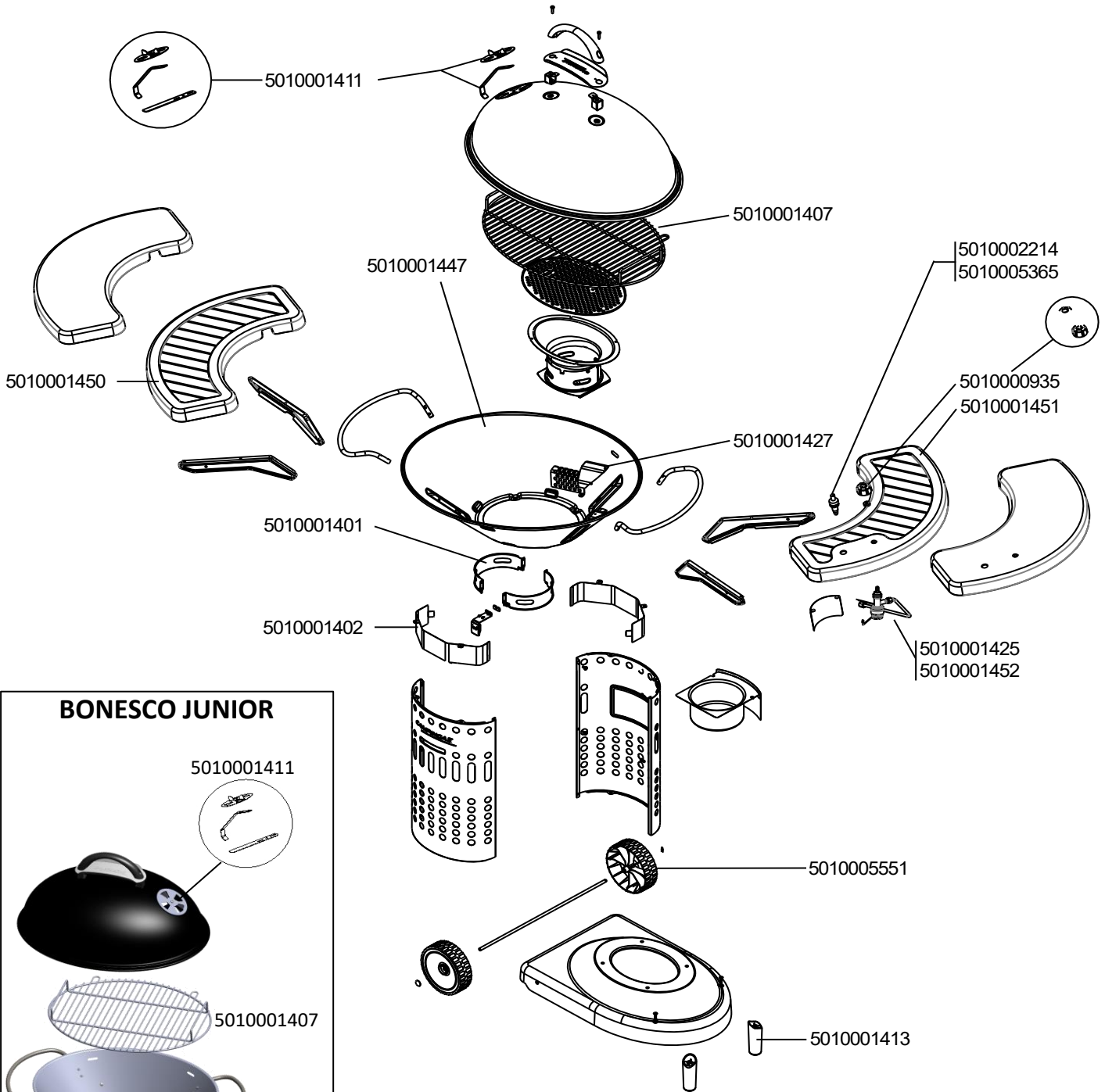


BONESCO QUICKSTART S



BONESCO QUICKSTART L

**BARBECUES : BONESCO
JUNIOR - CHARCOAL (SC - LC)
QUICKSTART (QST S - QST L)**



BONESCO JUNIOR



Screw bag
5010001454

**BARBECUES : BONESCO
CHARCOAL (SC - LC)
QUICKSTART (QST S - QST L)**

SPARE PARTS REF.	POINTS	EN DESCRIPTIONS	FR DESCRIPTIONS	JUNIOR	CHARCOAL S (SC)	CHARCOAL L (LC)	QUICKSTART S (QST S)	QUICKSTART L (QST L)
5010000935	30	KNOB (x1)	VOLANT (x1)				X	X
5010001401	30	SHUTTER	VOLET		X	X	X	X
5010001402	40	HEAT SHIELD	PARE CHALEUR PIED		X	X	X	X
5010001407	120	STEEL COOKING GRID	GRILLE DE CUISSON ACIER	X	X		X	
5010001411	30	HOOK + DAMPER	CROCHET + AERATEUR	X	X	X	X	X
5010001413	30	PLASTIC FOOT	PIED PLASTIQUE		X	X	X	X
5010001425	200	GAS RAIL 28Mb - EXPORT + TAP WASHER	TUBULURE 28Mb - EXPORT + RONDELLE				X	
5010001427	30	HEAT SHIELD BURNER	PARE CHALEUR BRULEUR				X	X
5010001447	230	BOTTOM	CUVE					X
5010001450	290	LEFT SIDE TABLE	ETAGERE GAUCHE					X
5010001451	290	RIGHT SIDE TABLE	ETAGERE DROITE					X
5010001452	200	GAS RAIL 28Mb - EXPORT	TUBULURE 28Mb - EXPORT					X
5010001454	80	SCREW BAG	SACHET DE VIS		X	X	X	X
5010002214	80	PIEZO 1 OUTLET	PIEZO SIMPLE				X	
5010005365	50	PIEZO DOUBLE	PIEZO DOUBLE					X
5010005551	50	WHEEL DIAMETER 160 (X 1) WITH CHROMED CAP	ROUE DIAMETRE 160 (X 1) AVEC ENJOLIVEUR CHROME		X	X	X	X