

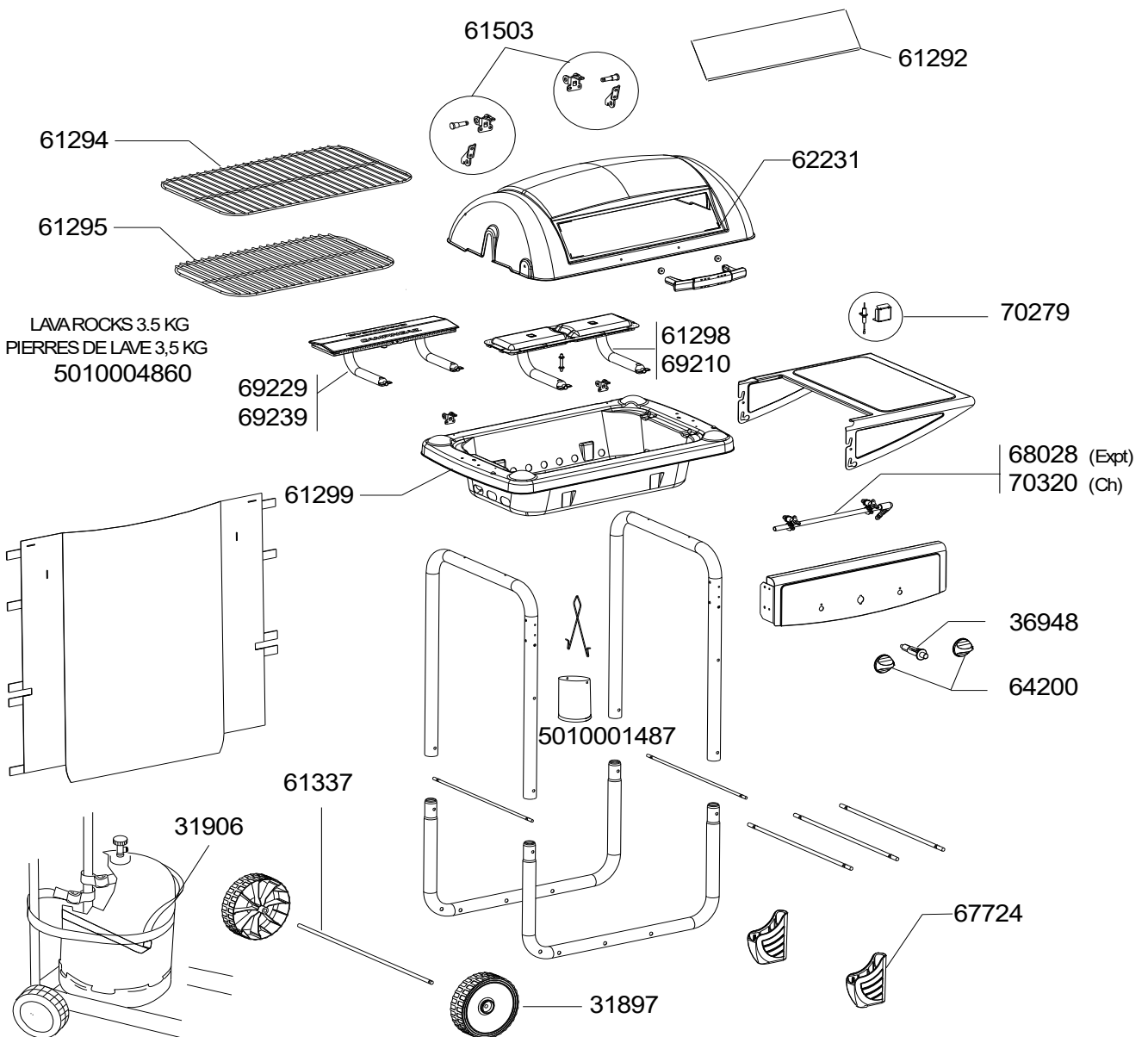
BARBECUES RANCHO & RANCHO PLUS - CLASSIC - SUPER - VENTURA (MOD.SUPER)



RANCHO



RANCHO - PLUS - SUPER - CLASSIC



**BARBECUES RANCHO & RANCHO
PLUS - CLASSIC - SUPER - VENTURA
(MOD.SUPER)**



| SPARE PARTS REF. | POINTS | EN DESCRIPTIONS | FR DESCRIPTIONS | RANCHO | RANCHO PLUS - SUPER - CLASSIC - VENTURA |
|------------------|--------|-----------------------------------|---------------------------------|--------|---|
| 31897 | 50 | WHEEL DIAMETER 175 (X 1) | ROUE DIAMETRE 175 (X 1) | X | X |
| 31906 | 30 | CYLINDER STRAP | SANGLE BOUTEILLE | X | X |
| 36948 | 60 | SIMPLE IGNITER | PIEZO SIMPLE | X | X |
| 61292 | 100 | GLASS + (SUPPORT x4) | VITRE + (EQUERRE x4) | X | X |
| 61294 | 100 | STEEL NICKEL CHROME COOKING GRATE | GRILLE DE CUISSON ACIER CHROMEE | X | X |
| 61295 | 90 | LAVA ROCK GRATE | GRILLE PIERRE DE LAVE | X | X |
| 61298 | 165 | BURNER 28Mb | BRULEUR 28Mb | X | X |
| 61299 | 295 | BASE | CUVE | X | X |
| 61337 | 50 | AXLE WHEEL | AXE DE ROUE | X | X |
| 61503 | 50 | LID HINGE SET (x2) | CHARNIERES + AXE (x2) COUVERCLE | X | X |
| 62231 | 60 | GLASS SQUARE SUPPORT (x4) | EQUERRE VITRE (x4) | X | X |
| 64200 | 30 | KNOBS (X2) | VOLANTS (X2) | X | X |
| 67724 | 40 | FOOT | PIED | X | X |
| 68028 | 150 | GAS PIPE 28Mb (Export) | TUBULURE 28Mb (Export) | X | X |
| 69210 | 150 | BURNER 50Mb | BRULEUR 50Mb | X | X |
| 69229 | 280 | CAST-IRON BURNER 28Mb | BRULEUR FONTE 28Mb | X | X |
| 69239 | 220 | CAST-IRON BURNER 50Mb | BRULEUR FONTE 50Mb | X | X |
| 70279 | 50 | ELECTRODE + HOLDER | ELECTRODE + CACHE ELECTRODE | X | X |
| 70320 | 150 | GAS PIPE 28Mb 1/4" (Ch) | TUBULURE 28Mb 1/4" (Ch) | | X |
| 5010001487 | 50 | GREASE CAN + WIRE | POT A GRAISSE + FIL | X | X |
| 5010004860 | 50 | LAVA ROCKS 3.5 KG | PIERRES DE LAVE 3,5 KG | X | X |