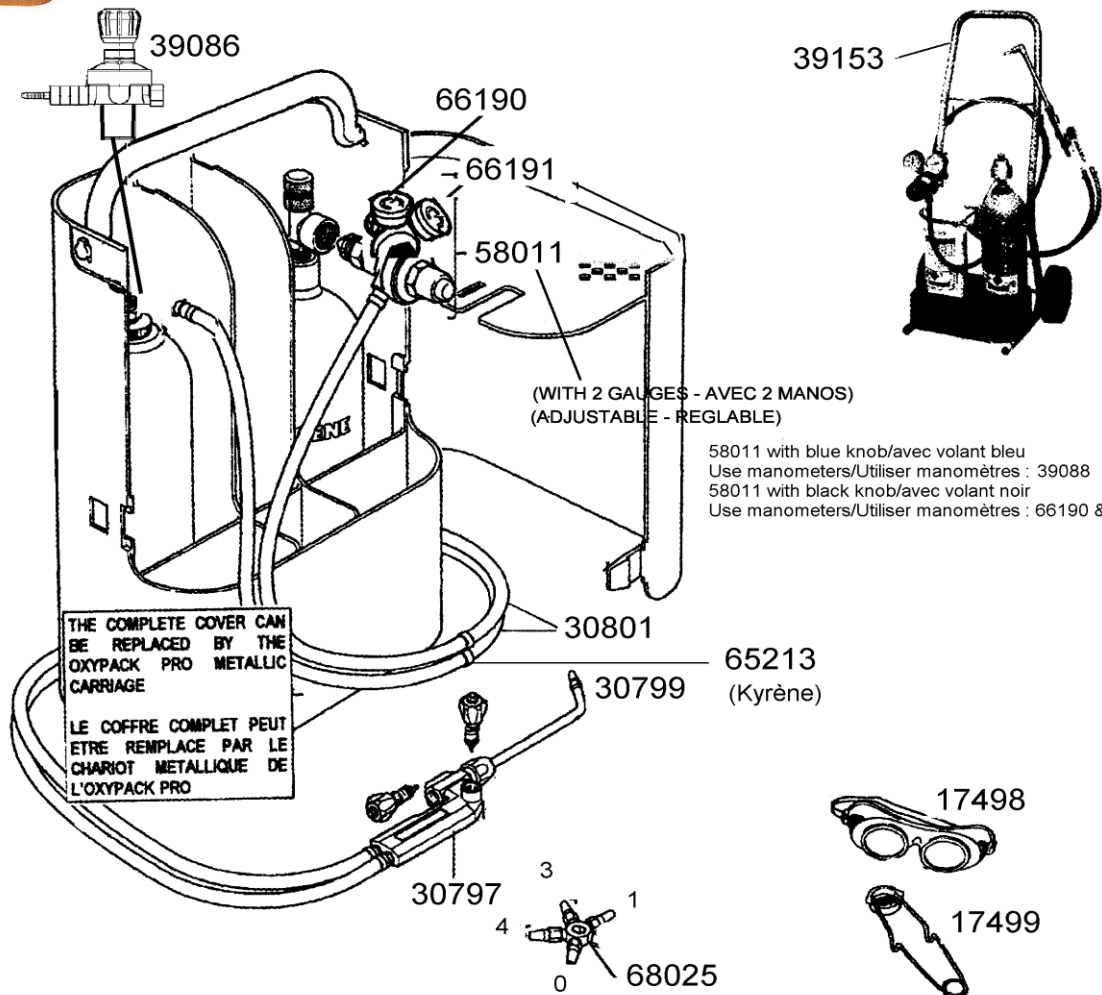


# OXYPACK 3000 OXYPACK MULTI 3000



REF.	POINTS	GB - DESIGNATIONS	DESIGNATIONS - F
17498	110	BLACK PROTECTION GLASSES	LUNETTE NOIRE
17499	90	GAS LIGHTER	ALLUME GAZ
30797	800	BLOWTORCH WITHOUT LANCE	CHALUMEAU SANS LANCE
30799	450	MALLEABLE LANCE BURNER+NUT	LANCE MALLEABLE+ECROU
30801	240	HOSES+COLLARS+CLIPS	TUYAUX + COLLIERS + CLIPS
39086	550	KYRENE REGULATOR WITH MANOMETER	DETENDEUR KYRENE AVEC MANOMETRE
39153	500	FULL METALLIC CARRIAGE	CHARIOT METALLIQUE COMPLET
58011	780	ADJUSTABLE REGULATOR + 2 GAUGES	DETENDEUR REGLABLE + 2 MANOMETRES
65213	200	HP HOSE LENGTH 4 M + COLLARS	TUYAU HP LG 4M + COLLIERS
66190	190	O2 PRESSURE GAUGE (200 Bar)	MANOMETRE BOUTEILLE (200 Bar)
66191	210	MANOMETER USE PRESSURE (15 Bar)	MANOMETRE UTILISATION (15 Bar)
68025	180	NOZZLE PLATE + NOZZLES No 0.1.3.4.	ETOILE BUSES No 0.1.3.4.